

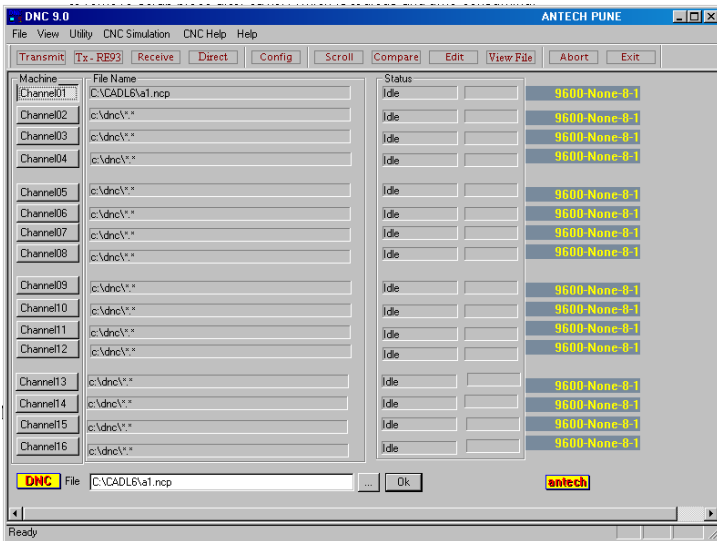
# DNC-9

## MORE INFORMATION

# UPDATE

July 2006

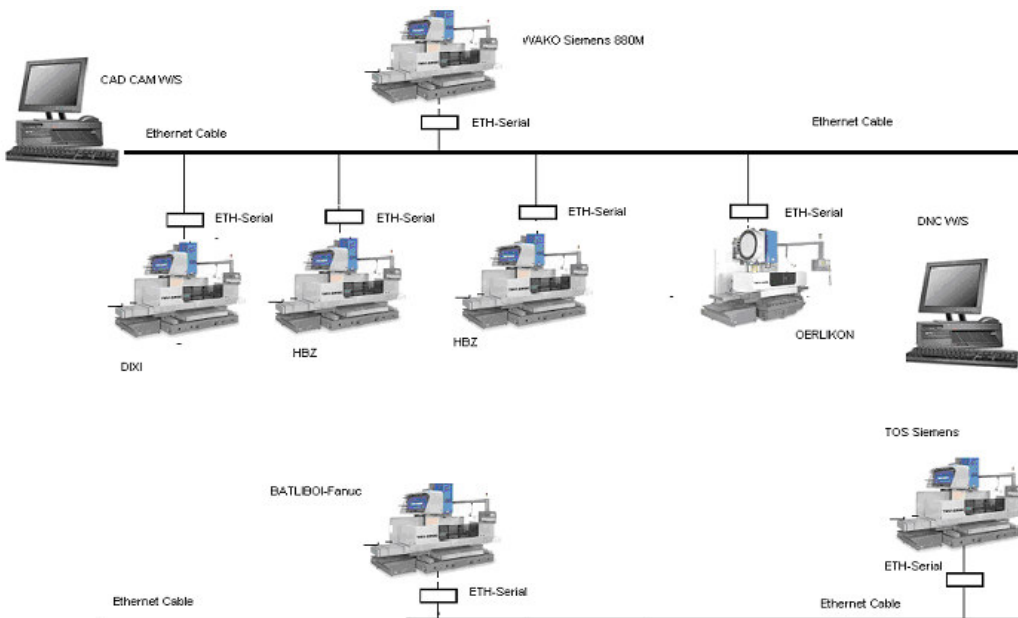
DNC 9 is the newest software from Antech used for managing large no of part programs in high tech CNC shops. This NT/win 2000/XP compatible software provides simultaneous data communication up to 32 CNC machines. With this unique capability, several operators can work at the same time on separate part programs within the same shop. And with immediate access to the desired data from CAD CAM lab. There are also many other intangible benefits associated with such an investment which can dramatically outweigh the productivity gains (i.e., re-work of nc programs, accessing the latest parameters, diagnostics parameters, revisions, re-use of data by other applications, data corruption etc.) with access to a large PC hard disk memory.



### Salient features

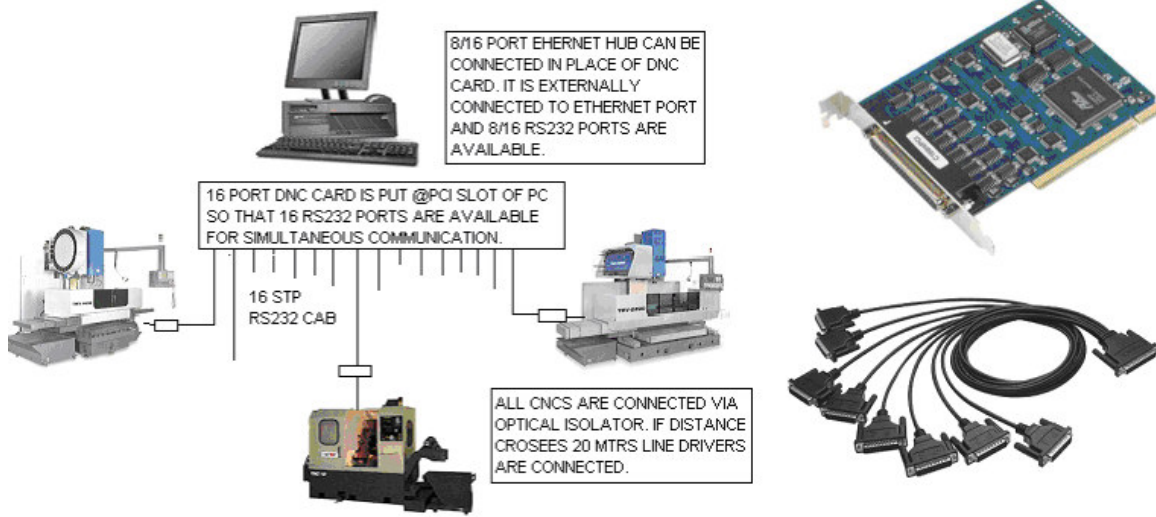
- Compatible with win98/NT/2000
- Block by block transfer of data.
- Simultaneous communication.
- High speed.
- Master/slave structure.
- History Access.
- Database.
- Unmanned operation.
- BTR-RE93 compatible
- Power fail option.
- Auto storage of NC programs

### DNC for Production units :



DNC can be used for managing part programs and diagnostic parameters. If user would like to use the existing LAN setup can go for this system. All Ethernet to Serial converters are used for each CNC. Nor recommended for Tool room applications.

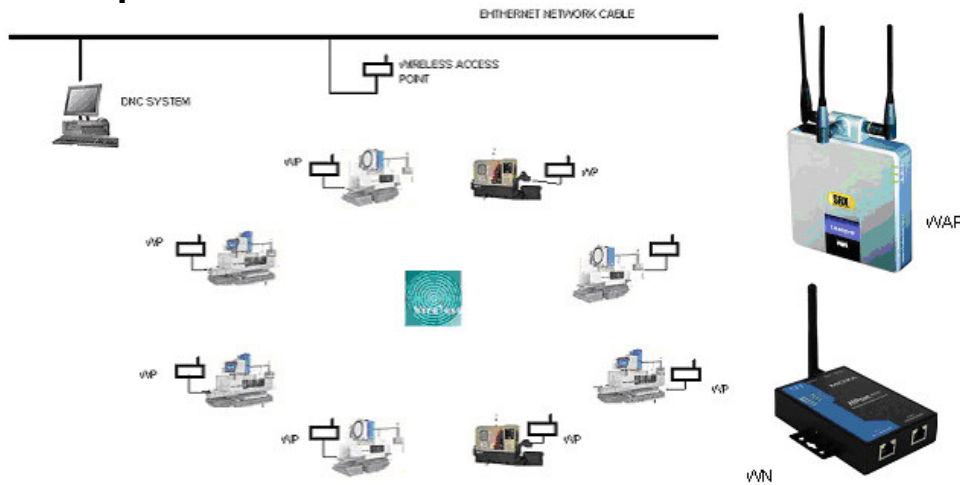
### 1.b DNC for production units :



8 port serial control card and it's cable available in 9db or 25db connectors.

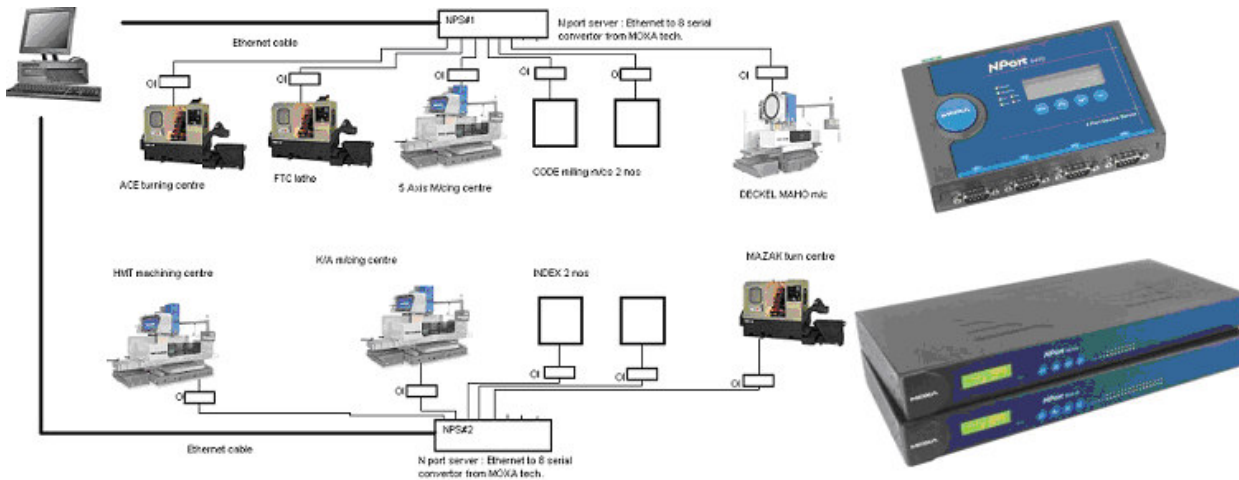
DNC in this setup was very common in older days. PC after connecting with 8 port Serial card gets 8/16 ports for communication can be connected to each CNC with optical isolators. This system also can be used in Tool rooms.

### Wireless DNC for production units



This setup is useful and now becoming most popular among production units. There is wiring required and is totally flexible. It can be even integrated with Shop link machine monitoring software.

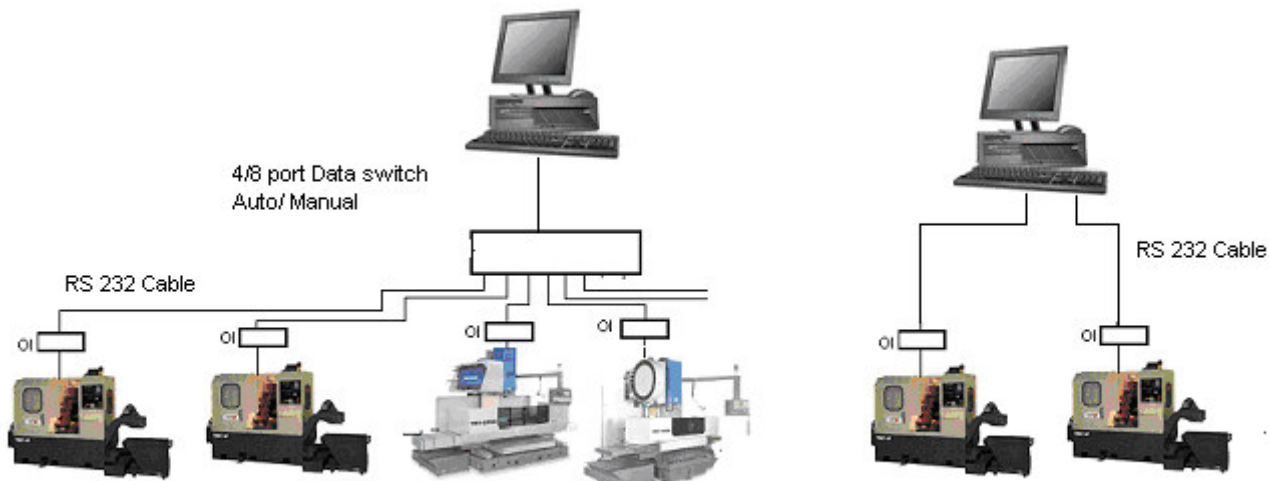
## DNC for Tool rooms



Nport server in sizes of 4 /8/16

This setup is ideally suitable and common in Tool room applications and CNC has RS232 port only for communication. Some CNC having Ethernet also can be connected to DNC as well.

## DNC for Small shops



With this setup maximum 8 CNC machines can be connected and Unlimited no of machines can be added in cascade fashion. Simultaneous communication can not be achieved but automatic Switching to request line can be done with automatic switch. Machines are connected with optical isolators

With this setup maximum 2 CNC machines can be Connected with DNC. Simultaneous communication with two machines can be done.

## BTR DNC for old NC controls

RE 93 is Electronic paper taper reader emulator for direct replacement of paper tape readers and punchers. It has got micro controller CPU for handling various protocols in CNC communication. It has electronic memory for storing NC data and Executable software. It has optically isolated RS232 port for PC communication. RE 93 can emulate following interfaces as on today and can be configured for any other interface if necessary timing diagrams are available with the customers. Multiple NC machines can be connected to PC in any DNC setup as mentioned above.

- **FANUC Reader**
- **Tally Reader**
- **Acrared Reader**
- **Gilmetti Reader**
- **General Electric**
- **SIO Syn Reader**
- **GNT Reader**
- **Remex Reader**
- **FER 202 Reader (AGIE)**
- **Facit Reader**
- **GNT Puncher**
- **Excellon CNC 6**



- **Fanuc 6M - With BTR RE93 block by block communication can be achieved. This facility is not available with RS232 port available on machine.**
- **JAPAX - Japax machines are fitted with Cassette for data transfer. Cassette can be eliminated with RE93.**
- **AGIE CNC wire EDM**
- **CMM**
- **OKK**
- **Okuma**
- **Pratt & Whitney**
- **Sieb and Mayor : PCB drill machines**

## Free DNC for single CNC

Download free DNC and use it forever for a single CNC machine. Distribute and copy it nos of times on any machines. It requires password for activation. Download [now..](#)

---

For Further Information contact

**ANTECH MICRO SYSTEMS PVT LTD**

**4 Chandramohini Apts, Lane 4 Subash nagar 1227 Shukrawar Peth Pune – 411 004.**

**Tele fax : +91 20 24451361, 24453552**

Email: [antechmicro@vsnl.com](mailto:antechmicro@vsnl.com), Visit us: [www.antechmicro.com](http://www.antechmicro.com)